

# Low-voltage transformer, 1,25-125 kVA, IP23

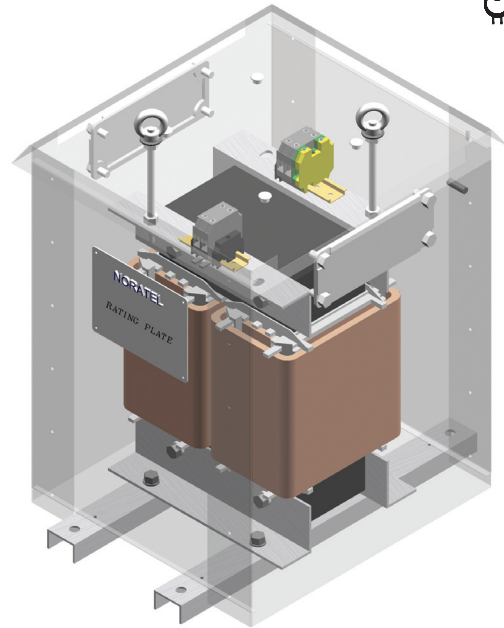


## Type 2LT-23

Capsulated single-phase non short circuit proof transformers with power range from 1,25 to 125 kVA. Designed and tested according to norm EN61558-2-4, IEC60076 and IEC60726. Standard types designed as Isolating transformers with separate primary and secondary windings. Degree of protection IP23. Accessories; Temperature control units with alarm or trip [TC], PT 100 sensors [PT], RTD sensors [RTD].

### Applications:

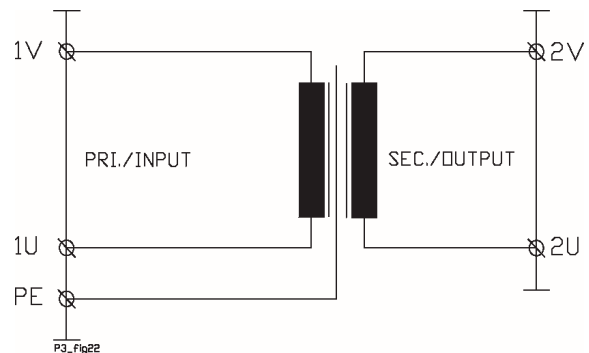
This is an ideal design for transforming voltage up or down, or for installations which require a galvanic partition between the primary and secondary voltage. E.g. electric motor, compressor, cooling plants, automatic washing machines, etc. Custom designed types with other voltages, frequencies, electrostatic shield between primary and secondary, regulations, tappings, transport wheels or other features are available on request.



## Technical specifications

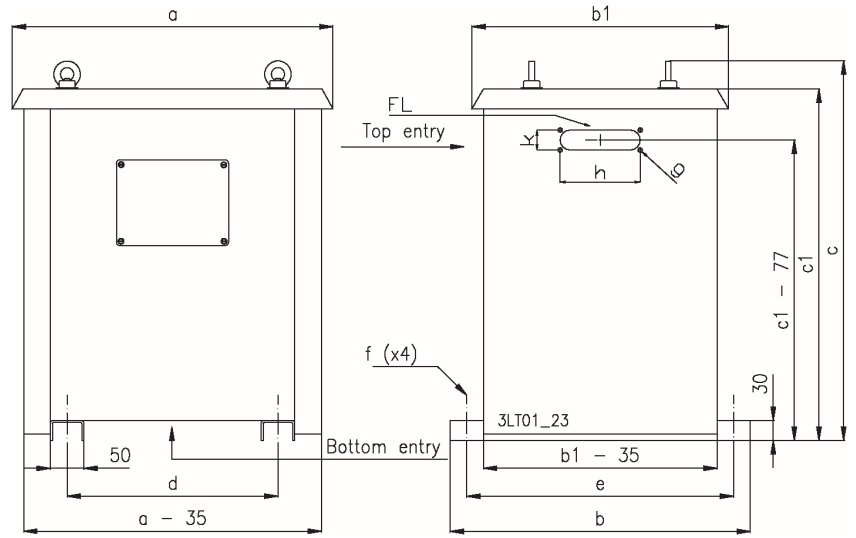
- Input voltage: 115V to 1000V
- Frequency: 47-63Hz
- Output voltage: 115V to 1000V
- According to: EN61558-2-4, D.N.V., IEC60726 / IEC60076
- Test/insulating voltage: 3kV AC RMS
- Construction class: I (earth terminal)
- Insulation class: F (155°C) - standard  
H (180°C) - option
- Ambient temp. (t<sub>a</sub>): 45°C (D.N.V)
- Degree of protection: IP00
- Connections: - Terminal block  
- Cu-bars

## Wiring diagram

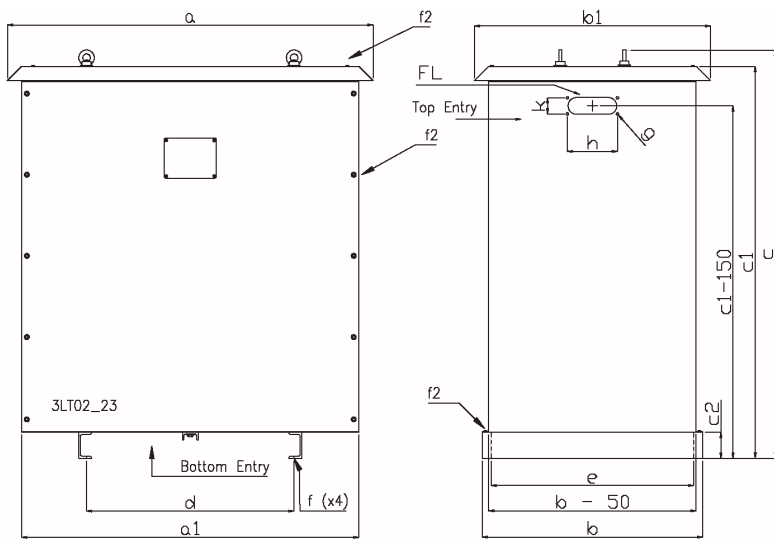


Noratel declare and guarantee that all transformers are designed according to the following standards; IEC60726, IEC60076, D.N.V., EN55014:1993 (EN55014-1:1997), EN61000-3-2:1995, EN61000-3-3:1995, EN55104:1995 (EN55014-2:1997), EN50081-1:1992, EN50082-2:1995 based on the following directives; L.V.D 73/23/EEC, 93/68/EEC, EMC 89/336/EEC, 91/263/EEC.

2LT1.25 - 2LT20



2LT25 - 2LT125



## Dimensions & weight

Power (kVA)		Type	Dimensions (mm)										Weight (kg)
Class F	Class H		a	b	c	a1	b1	c1	c2	d	e	f <sup>(a)</sup>	
1.25	1.4	2LT1.25	309	290	401	274	223	362	30	176	240	12.0	20
2.0	2.2	2LT2.0	343	320	431	308	253	392	30	200	270	12.0	27
3.0	3.3	2LT3.0	377	350	461	342	283	422	30	224	300	12.0	35
4.0	4.5	2LT4.0	427	400	515	392	333	467	30	264	350	15.0	45
5.0	5.6	2LT5.0	427	400	515	392	333	467	30	264	350	15.0	52
6.3	7.0	2LT6.3	427	400	515	392	333	467	30	264	350	15.0	58
8.0	8.9	2LT8.0	481	450	590	445	383	542	30	316	400	15.0	67
10.0	11	2LT10.0	481	450	590	445	383	542	30	316	400	15.0	84
12.5	14	2LT12.5	481	450	590	445	383	542	30	316	400	15.0	103
16	18	2LT16.0	599	550	630	630	483	582	30	356	500	15.0	116
20	22	2LT20.0	599	550	630	630	483	582	30	356	500	15.0	144
30	33	2LT30.0	670	520	827	600	540	770	50	340	470	14.0	165
40	45	2LT40.0	700	520	877	630	540	820	50	360	470	14.0	185
50	56	2LT50.0	700	520	877	630	540	820	50	360	470	14.0	220
63	70	2LT63.0	930	630	1057	840	670	1000	100	590	580	18.0	276
80	89	2LT80.0	930	630	1057	840	670	1000	100	590	580	18.0	316
100	110	2LT100	1030	700	1137	960	740	1080	100	590	650	18.0	410
125	138	2LT125	1030	700	1137	960	740	1080	100	590	650	18.0	475