

230-400/24VDC - max 10% ripple

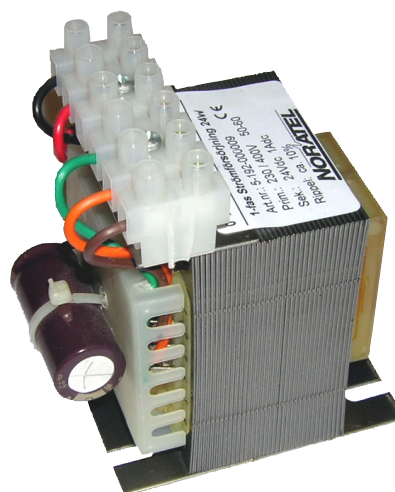


Type SUSL-K

Compact single-phase DC power supply with 24 VDC secondary voltage. Max. residual ripple approx. 10%. Designed and tested according to norm EN61558-2-6. Separate insulated windings. Protected against short circuit and overload with PTC fuse on. For fixed installation in cabinets or switchboards.

Application:

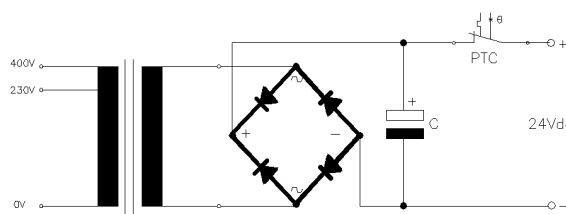
Power supply for PLC requiring DC voltage with max. 10% residual ripple. 230 or 400 Volt system voltage.



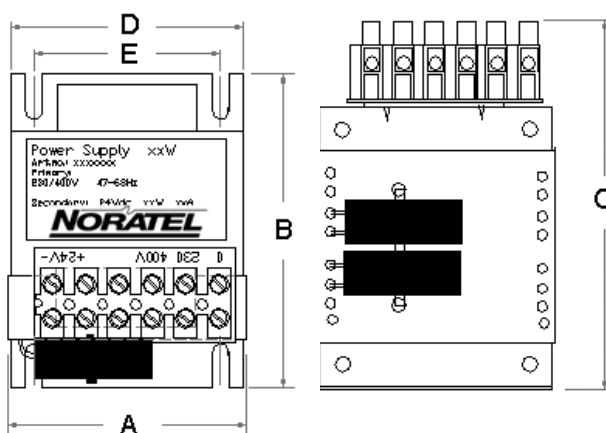
Technical specifications

- Input voltage: 230-400V
- Frequency: 47-63Hz
- Output voltage: 24VDC
- Max Ripple: 10% RMS
- Efficiency: >65%
- According to: EN61558-2-6
- Test/insulating voltage: 4kV AC RMS
- Construction class: I
- Insulation class: B (130°C)
- Ambient temp. (t_a): 40°C
- Degree of protection: IP00

Wiring diagram



Dimensions



Type	Voltage Sec. (VDC)	Current Sec. (A)	Power (W)	Losses (W)	Dimensions A-B-C-D-E (mm)	Weight (Kg)	Art. no.
230-400/24 VDC							
SUSL-K066B	24	1	24	12	56-70-92-55-33	1,1	5-192-000009
SUSL-K078C	24	2	48	20	70-83-103-65-39	1,6	5-192-000010
SUSL-K084B	24	3	72	23	72-94-112-70-56	1,9	5-192-000011